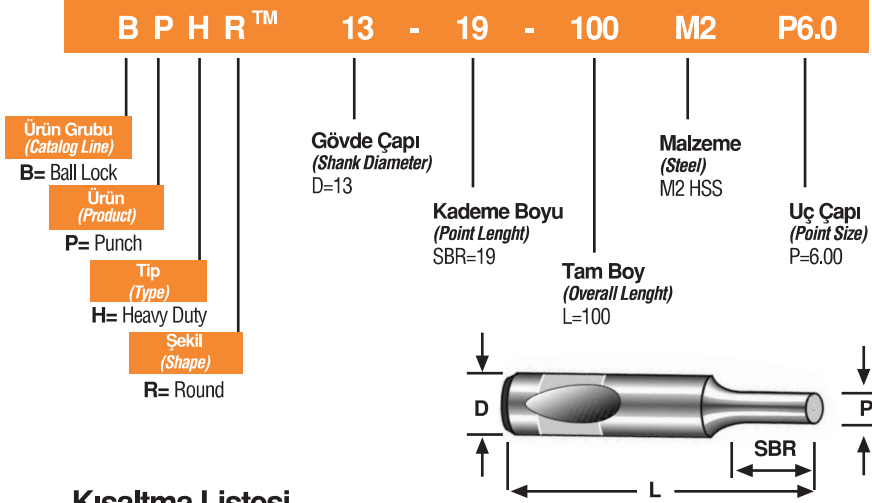





KATALOG KULLANIMI

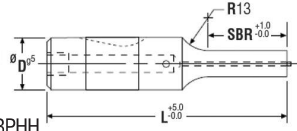
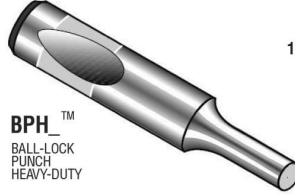
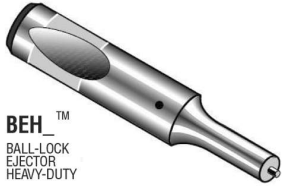
ÖRNEK ÜRÜN KODLAMA



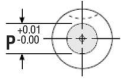
Kısaltma Listesi

Ürün Grubu	Ürün	Tip	Şekil
B Bilyalı Hızlı Değiştirilebilir	P Zimba (Punch)	L Hafif İş (Light duty)	R Yuvarlak (Round)
	E İtici Zimba (Ejector punch)	H Ağır İş (Heavy duty)	O Slot (Oblong)
G Genel Ekonomik	B Matris (Button die)	E Extra Ağır İş (Extra heavy duty)	S Kare/Dikdörtgen (Square/rect.)
	R Tutucu (Retainer)	S Şapkali (Shoulder)	H Yüksek İmalat (High production)
P Hassas Dar Toleranslı	Q İnce Zimbalar (Quill punch)	P Press Fit (Press-fit)	P Parabolik Pilot (Parabolic pilot)
	G Klavuz Burç (Guide bushing)	N Numerik (Numerical)	A Açılı Pilot (Angular pilot)
	I Ters Zimba (Inverted punch)	B Havşa Başlı (Bevel head)	B Küçük (Blank)
	N Burun Uzun (Nose-over ejector)	U Yukarı Şapka (Up-head)	C Özel Şekil (Classified shape)
	H Raptiye (Holder)	D Aşağı Şapka (Down-head)	D Çekme/Extrüzyon (Draw/extrusion)
	D Matris Kesidi (Die section)	R Düşürülmüş Çap (Reduced "D")	M Çoklu Zimba (Multi-hole)
		W Tel Kesim (Wire-cut)	T Tru-Lock (Tru-Lock)
			E Uç (End)

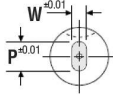
BİLYALI KADEMELİ ZIMBA



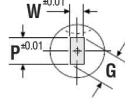
BEHR / BPHR
YUVARLAK



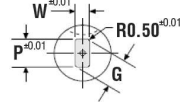
BEHO / BPHO
SLOT



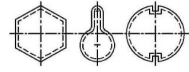
BEHS / BPHS
DİKDÖRTGEN



BEHH / BPHH
YÜKSEK ADET



BEHC / BPHC
ÖZEL FORM



BEH

İTİCİLİ

SİPARİŞ ÖRNEĞİ

(12) BEHR 13-1 3-71 M2 P10.1
(12) BEHO 20-19-80 M2 P18.2 W9.5 BS-90°

TİP	D	SBR					L						P	W	İTİCİ TİPİ	
		10	13	19	25	32	63	71	80	90	100	110				125
BEH_	10	10	13	19			63	71	80	90	100	110		2,9	2,9	E4M
BEH_	13		13	19			63	71	80	90	100	110	125	4,0	4,0	E6M
BEH_	16		13	19	25		63	71	80	90	100	110	125	6,0	6,0	E9M
BEH_	20		13	19	25		63	71	80	90	100	110	125	6,0	6,0	E9M
BEH_	25		13	19	25			71	80	90	100	110	125	8,0	8,0	E9M
BEH_	32		13	19	25			71	80	90	100	110	125	10,0	10,0	E12M
BEH_	40			19	25	32			80	90	100	110	125	12,0	12,0	E12M

BPH

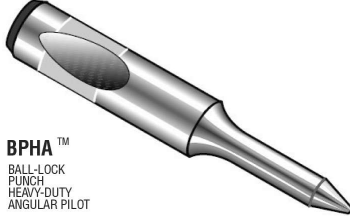
İTİCİSİZ

SİPARİŞ ÖRNEĞİ

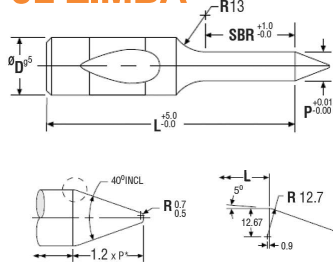
(12) BPHR 13-1 3-71 M2 P10.1
(15) BPHO 20-19-80 M2 P18.2 W9.5 BS-90°

TİP	D	SBR					L						P	W	
		10	13	19	25	32	63	71	80	90	100	110			125
BPH_	10	10	13	19			63	71	80	90	100			1,4	1,4
BPH_	13		13	19			63	71	80	90	100	110	125	2,1	2,1
BPH_	16		13	19	25		63	71	80	90	100	110	125	5,0	5,0
BPH_	20		13	19	25		63	71	80	90	100	110	125	6,0	6,0
BPH_	25		13	19	25			71	80	90	100	110	125	8,0	8,0
BPH_	32		13	19	25			71	80	90	100	110	125	10,0	10,0
BPH_	40			19	25	32			80	90	100	110	125	12,0	12,0

BİLYALI KONİK KLAVUZ ZIMBA



BPHA™
BALL-LOCK
PUNCH
HEAVY-DUTY
ANGULAR PILOT



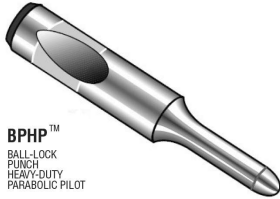
SİPARİŞ ÖRNEĞİ

(12) BPHA 16-25-100 M2 P10,2

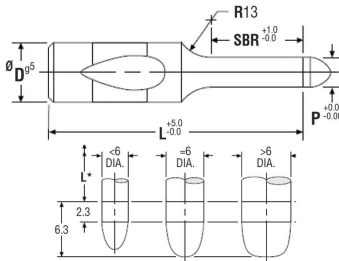
BPHA

TİP	D	SBR					L							P		
		10	13	19	25	32	63	71	80	90	100	110	125		140	150
BPHA	10	10	13	19			63	71	80	90	100	110				1,3
BPHA	13		13	19				71	80	90	100	110	125	140		2,0
BPHA	16		13	19	25			71	80	90	100	110	125	140	150	4,9
BPHA	20		13	19	25			71	80	90	100	110	125	140	150	5,9
BPHA	25		13	19	25			80	90	100	110	125	140	150		7,9
BPHA	32		13	19	25			80	90	100	110	125	140	150		9,9
BPHA	40			19	25	32		80	90	100	110	125	140	150		11,9

BİLYALI PARABOLİK KLAVUZ ZIMBA



BPHP™
BALL-LOCK
PUNCH
HEAVY-DUTY
PARABOLIC PILOT



SİPARİŞ ÖRNEĞİ

(15) BPHP 16-21-62 M2 P8,8

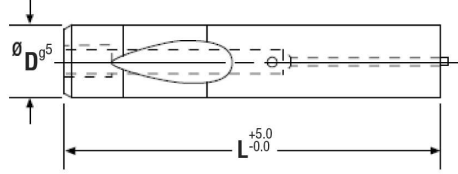
BPHP

TİP	D	SBR					L							P	
		10	13	19	25	32	63	71	80	90	100	110	125		
BPHP	10	10	13	19			63	71	80	90	100				1,3
BPHP	13		13	19			63	71	80	90	100	110	125		2,0
BPHP	16		13	19	25		63	71	80	90	100	110	125		4,9
BPHP	20		13	19	25		63	71	80	90	100	110	125		5,9
BPHP	25		13	19	25		63	71	80	90	100	110	125		7,9
BPHP	32		13	19	25			71	80	90	100	110	125		9,9
BPHP	40			19	25	32		80	90	100	110	125			11,9

İTİCİLİ BİLYALI ZIMBA



BEHB™
BALL-LOCK
EJECTOR
HEAVY-DUTY
BLANK



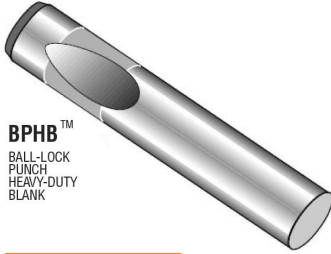
BEHB

TİP	D	L							İTİCİ TİPİ
		63	71	80	90	100	110	125	
BEHB	10	63	71	80	90	100			E4M
BEHB	13	63	71	80	90	100	110	125	E6M
BEHB	16	63	71	80	90	100	110	125	E9M
BEHB	20	63	71	80	90	100	110	125	E9M
BEHB	25		71	80	90	100	110	125	E9M
BEHB	32		71	80	90	100	110	125	E12M
BEHB	40			80	90	100	110	125	E12M

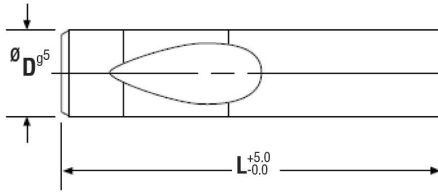
SİPARİŞ ÖRNEĞİ

(15) BEHB 32-90 M2

İTİCİSİZ BİLYALI ZIMBA



BPHB™
BALL-LOCK
PUNCH
HEAVY-DUTY
BLANK



BPHB

TİP	D	L										
		63	71	80	90	100	110	125	140	150	175	200
BPHB	10	63	71	80	90	100	110	125				
BPHB	13	63	71	80	90	100	110	125	140	150	175	
BPHB	16	63	71	80	90	100	110	125	140	150	175	
BPHB	20	63	71	80	90	100	110	125	140	150	175	
BPHB	25		71	80	90	100	110	125	140	150	175	200
BPHB	32		71	80	90	100	110	125	140	150	175	200
BPHB	40			80	90	100	110	125	140	150	175	200

SİPARİŞ ÖRNEĞİ

(12) BPHB 32-125 M2

İTİCİLİ BİLYALI TERS ZIMBA

BNHR

TİP	D	SBR	L				P Min	P Max	İTİCİ TİPİ
			71	80	90	100			
BNHR	13	20	71	80	90	100	13,1	32,0	E6M
BNHR	16	25	71	80	90	100	16,1	38,0	E9M
BNHR	20	25	71	80	90	100	20,1	38,0	E9M
BNHR	25	25	71	80	90	100	25,1	45,0	E9M
BNHR	32	32		80	90	100	32,1	50,0	E12M
BNHR	40	32		80	90	100	40,1	63,5	E12M

BNHO

TİP	D	SBR	L				P Min	P Max	İTİCİ TİPİ
			71	80	90	100			
BNHO	13	20	71	80	90	100	5,0	32,0	E6M
BNHO	16	25	71	80	90	100	6,5	38,0	E9M
BNHO	20	25	71	80	90	100	8,0	38,0	E9M
BNHO	25	25	71	80	90	100	11,0	45,0	E9M
BNHO	32	32		80	90	100	12,5	50,0	E12M
BNHO	40	32		80	90	100	14,0	63,5	E12M

BNHS

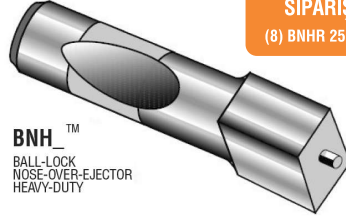
TİP	D	SBR	L				P Min	P Max	İTİCİ TİPİ
			71	80	90	100			
BNHS	13	20	71	80	90	100	5,0	32,0	E6M
BNHS	16	25	71	80	90	100	6,5	38,0	E9M
BNHS	20	25	71	80	90	100	8,0	38,0	E9M
BNHS	25	25	71	80	90	100	11,0	45,0	E9M
BNHS	32	32		80	90	100	12,5	50,0	E12M
BNHS	40	32		80	90	100	14,0	63,5	E12M

BNHH

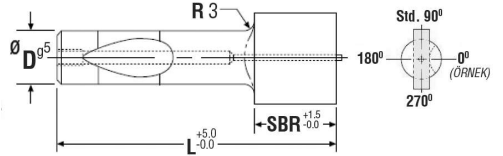
TİP	D	SBR	L				P Min	P Max	İTİCİ TİPİ
			71	80	90	100			
BNHH	13	20	71	80	90	100	5,0	32,0	E6M
BNHH	16	25	71	80	90	100	6,5	38,0	E9M
BNHH	20	25	71	80	90	100	8,0	38,0	E9M
BNHH	25	25	71	80	90	100	11,0	45,0	E9M
BNHH	32	32		80	90	100	12,5	50,0	E12M
BNHH	40	32		80	90	100	14,0	63,5	E12M

SİPARİŞ ÖRNEĞİ

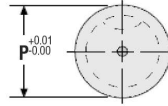
(8) BNHR 25-25-90 M2 P32,4



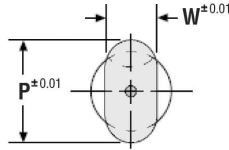
BNH™
BALL-LOCK
NOSE-OVER-EJECTOR
HEAVY-DUTY



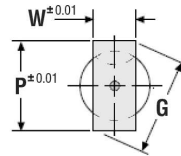
BNHR YUVARLAK



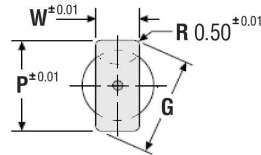
BNHO SLOT



BNHS DİKTÖRTGEN



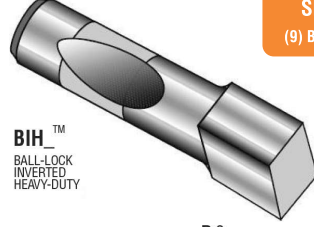
BNHH YÜKSEK ADET



İTİCİSİZ BİLYALI TERS ZIMBA

BIHR

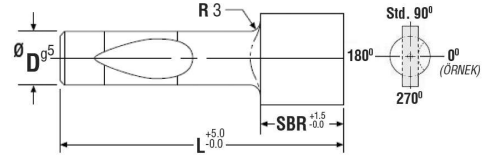
TİP	D	SBR	L				P	
			71	80	90	100	Min	Max
BIHR	13	20	71	80	90	100	13,1	32,0
BIHR	16	25	71	80	90	100	16,1	38,0
BIHR	20	25	71	80	90	100	20,1	38,0
BIHR	25	25	71	80	90	100	25,1	45,0
BIHR	32	32		80	90	100	32,1	50,0
BIHR	40	32		80	90	100	40,1	63,5



SİPARİŞ ÖRNEĞİ

(9) BIHR 25-25-90 M2 P32,4

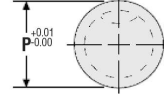
BIHR™
BALL-LOCK
INVERTED
HEAVY-DUTY



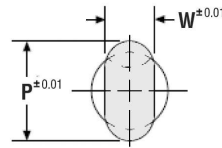
BIHO

TİP	D	SBR	L				P	
			71	80	90	100	Min	Max
BIHO	13	20	71	80	90	100	5,0	32,0
BIHO	16	25	71	80	90	100	6,5	38,0
BIHO	20	25	71	80	90	100	8,0	38,0
BIHO	25	25	71	80	90	100	11,0	45,0
BIHO	32	32		80	90	100	12,5	50,0
BIHO	40	32		80	90	100	14,0	63,5

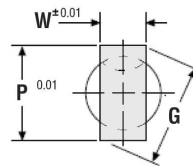
BIHR YUVARLAK



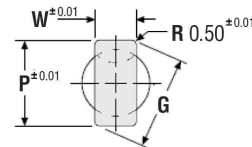
BIHO SLOT



BIHS DİKTÖRTGEN



BIHH YÜKSEK ADET

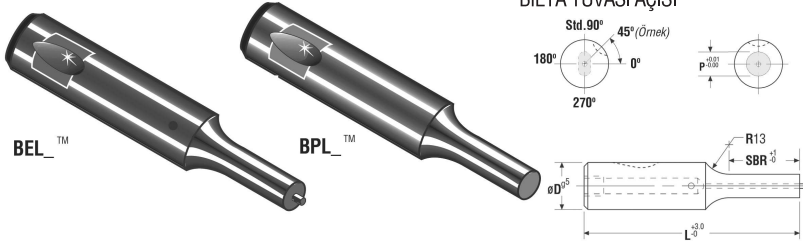


BIHS

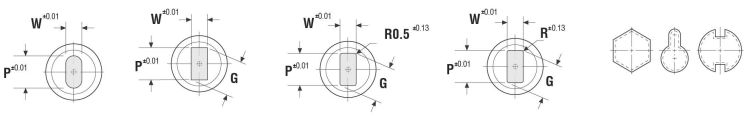
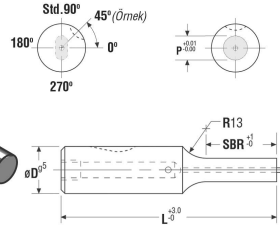
TİP	D	SBR	L				P	
			71	80	90	100	Min	Max
BIHS	13	20	71	80	90	100	5,0	32,0
BIHS	16	25	71	80	90	100	6,5	38,0
BIHS	20	25	71	80	90	100	8,0	38,0
BIHS	25	25	71	80	90	100	11,0	45,0
BIHS	32	32		80	90	100	12,5	50,0
BIHS	40	32		80	90	100	14,0	63,5

BIHH

TİP	D	SBR	L				P	
			71	80	90	100	Min	Max
BIHH	13	20	71	80	90	100	5,0	32,0
BIHH	16	25	71	80	90	100	6,5	38,0
BIHH	20	25	71	80	90	100	8,0	38,0
BIHH	25	25	71	80	90	100	11,0	45,0
BIHH	32	32		80	90	100	12,5	50,0
BIHH	40	32		80	90	100	14,0	63,5



BİLYA YUVASI AÇISI



BEL

SİPARİŞ ÖRNEĞİ (12) BELR 13-13-71 M2 P1.0.
(12) BELO 20-19-80 M2 P18.2 W9.5 BS-90°

TİP	D	SBR								L				P	W	İTİCİ TİPİ
		10	13	19	25	50	56	63	71	80	90	100				
BEL_	6	10	13			50	56	63	71	80			2,1	2,1	E3M	
BEL_	10	10		19		50	56	63	71	80	90	100	2,1	2,1	E4M	
BEL_	13		13	19		50	56	63	71	80	90	100	5,0	4,5	E6M	
BEL_	16		13	19	25		56	63	71	80	90	100	8,0	6,0	E9M	
BEL_	20		13	19	25		56	63	71	80	90	100	12,0	8,0	E9M	
BEL_	25		13	19	25		56	63	71	80	90	100	16,0	10,0	E9M	
BEL_	32		13	19	25				71	80	90	100	24,0	12,5	E12M	
BEL_	38			19	25					80	90	100	30,0	14,0	E12M	

BPL

SİPARİŞ ÖRNEĞİ (12) BPLR 6-13-63 M2 P4.2
(15) BPLO 25-19-80 M2 P21.6 W12.2 BS-90°

TİP	D	SBR								L				P	W
		10	13	19	25	50	56	63	71	80	90	100			
BPL_	6	10	13			50	56	63	71	80			2,1	2,1	
BPL_	10	10		19		50	56	63	71	80	90	100	2,1	2,1	
BPL_	13		13	19		50	56	63	71	80	90	100	5,0	4,5	
BPL_	16		13	19	25		56	63	71	80	90	100	8,0	6,0	
BPL_	20		13	19	25		56	63	71	80	90	100	12,0	8,0	
BPL_	25		13	19	25		56	63	71	80	90	100	16,0	10,0	
BPL_	32		13	19	25				71	80	90	100	24,0	12,5	
BPL_	38			19	25					80	90	100	30,0	14,0	