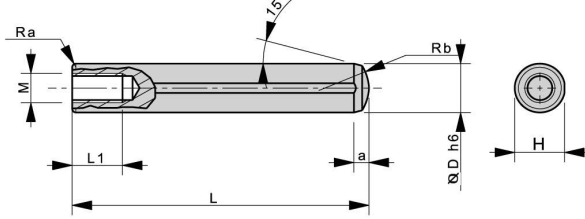
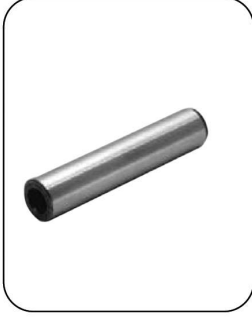


## ÇEKTİRMELİ TESPİT PİMİ



### SİPARİŞ ÖRNEĞİ

CTPM 6 20  
D L

**Not:** Toleranssız tüm ölçüler EN 22768-1(m) standardına göre tüm köşelere pah kırılacak.

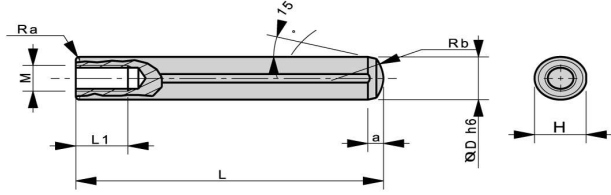
**Malzeme:** 100Cr6 / 16MnC5

### CTPM

D ▶	6ız					8ız										10ız											
L	20	25	30	35	40	20	25	30	35	40	45	50	55	60	30	35	40	45	50	55	60	65	70	-	-		
L1 ▶	8	8	8	8	8	8	8	8	8	8	8	8	8	8	10	10	10	10	10	10	10	10	10	-	-		
Ra	0.75	0.75	0.75	0.75	0.75	1	1	1	1	1	1	1	1	1	1	1	1	1	1	1	1	1	1	-	-		
Rb	6	6	6	6	6	8	8	8	8	8	8	8	8	8	10	10	10	10	10	10	10	10	10	-	-		
M	M4	M4	M4	M4	M4	M5	M5	M5	M5	M5	M5	M5	M5	M5	M6	M6	M6	M6	M6	M6	M6	M6	M6	-	-		
H▶	5.9	5.9	5.9	5.9	5.9	7.9	7.9	7.9	7.9	7.9	7.9	7.9	7.9	7.9	9.9	9.9	9.9	9.9	9.9	9.9	9.9	9.9	9.9	-	-		
a	2	2	2	2	2	2.5	2.5	2.5	2.5	2.5	2.5	2.5	2.5	2.5	3	3	3	3	3	3	3	3	3	-	-		

D	12ız										14▼							16ız							
L	30	35	40	45	50	55	60	65	70	35	40	45	50	55	60	65	70	45	50	55	60	65	70	75	80
L1	10	10	10	10	10	10	10	10	10	14	14	14	14	14	14	14	14	15	15	15	15	15	15	15	15
Ra ▶	1	1	1	1	1	1	1	1	1	1	1	1	1	1	1	1	1	1.4	1.4	1.4	1.4	1.4	1.4	1.4	1.4
Rb	12	12	12	12	12	12	12	12	12	14	14	14	14	14	14	14	14	16	16	16	16	16	16	16	16
M	M6	M6	M6	M6	M6	M6	M6	M6	M6	M8	M8	M8	M8	M8	M8	M8	M8	M8	M8	M8	M8	M8	M8	M8	M8
H	11.8										13.8							15.75							
a ▶	3.5	3.5	3.5	3.5	3.5	3.5	3.5	3.5	3.5	3.5	3.5	3.5	3.5	3.5	3.5	3.5	3.5	4	4	4	4	4	4	4	4

## ÇEKTİRMELİ TESPİT PİMİ



### SİPARİŞ ÖRNEĞİ

CTPH 6 20  
D L

**Not:** Toleranssız tüm ölçüler EN 22768-1(m) standardına göre tüm köşelere pah kırılacak.

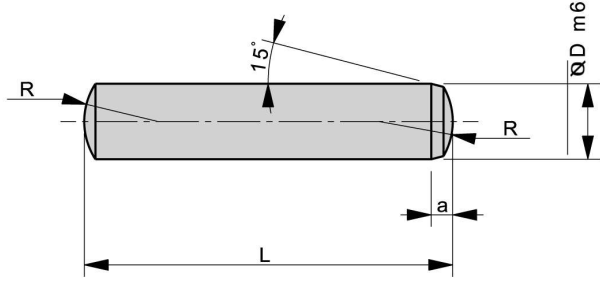
**Malzeme:** 100Cr6 / 16MnC5

### CTPH

D	6ız					8ız										10▼											
L	20	25	30	35	40	20	25	30	35	40	45	50	55	60	30	35	40	45	50	55	60	65	70	-	-		
L1 ▶	8	8	8	8	8	8	8	8	8	8	8	8	8	8	10	10	10	10	10	10	10	10	10	-	-		
Ra	0,75	0,75	0,75	0,75	0,75	1	1	1	1	1	1	1	1	1	1	1	1	1	1	1	1	1	1	1	-	-	
Ra	6	6	6	6	6	8	8	8	8	8	8	8	8	8	10	10	10	10	10	10	10	10	10	-	-		
M	M4	M4	M4	M4	M4	M5	M5	M5	M5	M5	M5	M5	M5	M5	M6	M6	M6	M6	M6	M6	M6	M6	M6	-	-		
H ▶	5.9	5.9	5.9	5.9	5.9	7.9	7.9	7.9	7.9	7.9	7.9	7.9	7.9	7.9	9.9	9.9	9.9	9.9	9.9	9.9	9.9	9.9	9.9	-	-		
a	2	2	2	2	2	2.5	2.5	2.5	2.5	2.5	2.5	2.5	2.5	2.5	3	3	3	3	3	3	3	3	3	-	-		

D ▶	12ız										14ız										16ız									
L	30	35	40	45	50	55	60	65	70	35	40	45	50	55	60	65	70	45	50	55	60	65	70	75	80					
L1 ▶	10	10	10	10	10	10	10	10	10	10	14	14	14	14	14	14	14	15	15	15	15	15	15	15	15					
Ra	1	1	1	1	1	1	1	1	1	1	1	1	1	1	1	1	1	1.4	1.4	1.4	1.4	1.4	1.4	1.4	1.4					
Ra	12	12	12	12	12	12	12	12	12	14	14	14	14	14	14	14	14	16	16	16	16	16	16	16	16					
M	M6	M6	M6	M6	M6	M6	M6	M6	M6	M8	M8	M8	M8	M8	M8	M8	M8	M8	M8	M8	M8	M8	M8	M8	M8					
H	11.8										13.8										15.75									
a ▶	3.5	3.5	3.5	3.5	3.5	3.5	3.5	3.5	3.5	3.5	3.5	3.5	3.5	3.5	3.5	3.5	3.5	4	4	4	4	4	4	4	4					

## TESPİT PİMİ



### SİPARİŞ ÖRNEĞİ

TPM 6 20  
D L

**Not:** Toleranssız tüm ölçüler EN 22768-1(m) standardına göre tüm köşelere pah kırılacak.

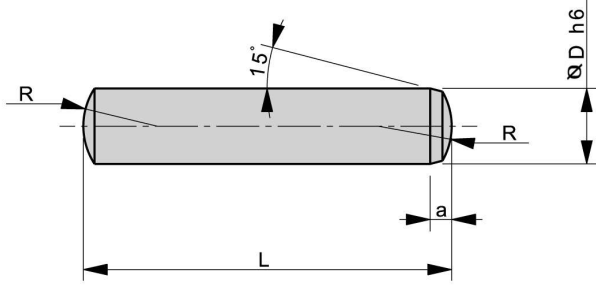
**Malzeme:** 100Cr6 / 16MnCr5

### TPM

D ▶	6ız					8ız										10ız									
L	20	25	30	35	40	20	25	30	35	40	45	50	55	60	30	35	40	45	50	55	60	65	70	-	-
L1 ▶	8	8	8	8	8	8	8	8	8	8	8	8	8	8	10	10	10	10	10	10	10	10	10	-	-
R	6	6	6	6	6	8	8	8	8	8	8	8	8	8	10	10	10	10	10	10	10	10	10	-	-
a	2	2	2	2	2	2.5	2.5	2.5	2.5	2.5	2.5	2.5	2.5	2.5	3	3	3	3	3	3	3	3	3	-	-

D ▶	12ız								14ız								16ız								
L	30	35	40	45	50	55	60	65	70	35	40	45	50	55	60	65	70	45	50	55	60	65	70	75	80
L1 ▶	10	10	10	10	10	10	10	10	10	10	14	14	14	14	14	14	14	15	15	15	15	15	15	15	15
R	12	12	12	12	12	12	12	12	12	12	14	14	14	14	14	14	14	16	16	16	16	16	16	16	16
a	3.5	3.5	3.5	3.5	3.5	3.5	3.5	3.5	3.5	3.5	3.5	3.5	3.5	3.5	3.5	3.5	4	4	4	4	4	4	4	4	

## TESPİT PİMİ



### SİPARİŞ ÖRNEĞİ

TPH 8 25  
D L

**Not:** Toleranssız tüm ölçüler EN 22768-1(m) standardına göre tüm köşelere pah kırılacak.

**Malzeme:** 100Cr6 / 16MnC5

### TPH

Dry	6 ▼					8ız										10ız											
L	20	25	30	35	40	20	25	30	35	40	45	50	55	60	30	35	40	45	50	55	60	65	70	-	-		
L1	8	8	8	8	8	8	8	8	8	8	8	8	8	8	10	10	10	10	10	10	10	10	10	-	-		
R ▶	6	6	6	6	6	8	8	8	8	8	8	8	8	8	10	10	10	10	10	10	10	10	10	-	-		
a	2	2	2	2	2	2.5	2.5	2.5	2.5	2.5	2.5	2.5	2.5	2.5	3	3	3	3	3	3	3	3	3	-	-		

D ▶	12ız										14 ▼										16ız									
L	30	35	40	45	50	55	60	65	70	35	40	45	50	55	60	65	70	45	50	55	60	65	70	75	80					
L1	10	10	10	10	10	10	10	10	10	14	14	14	14	14	14	14	14	15	15	15	15	15	15	15	15					
R ▶	12	12	12	12	12	12	12	12	12	14	14	14	14	14	14	14	14	16	16	16	16	16	16	16	16					
a ▶	3.5	3.5	3.5	3.5	3.5	3.5	3.5	3.5	3.5	3.5	3.5	3.5	3.5	3.5	3.5	3.5	3.5	4	4	4	4	4	4	4	4					