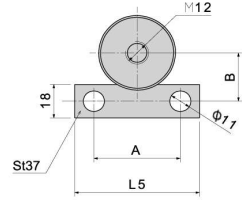
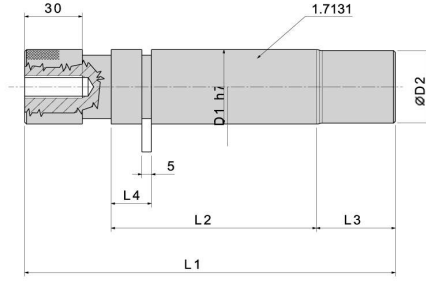
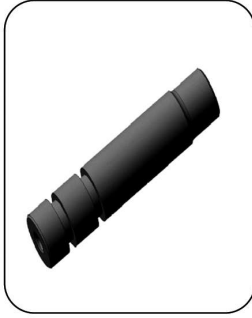


KALIP ASKI BROŞU



SİPARİŞ ÖRNEĞİ

KAB01 30
D1

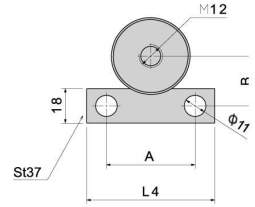
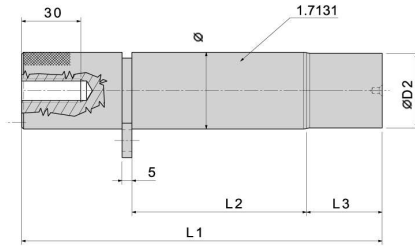
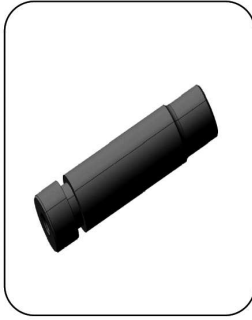
Not: Toleranssız tüm ölçüler EN 22768-1(m) standardına göre tüm köşelere pah kırılacak.

Malzeme: CK45

KAB01

D1 ▶	30▼	40▼	50▼
D2	29	39	49
L1	155	193	229
L2	87	109	131
L3 ▶	33	39	43
L4	19	21	23
L5	50	65	70
A ▶	35	45	50
B ▶	22	27	32

KALIP ASKI BROSU



SİPARİŞ ÖRNEĞİ

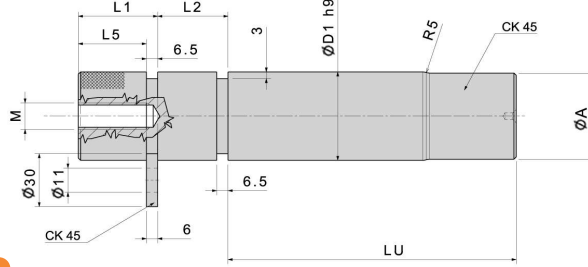
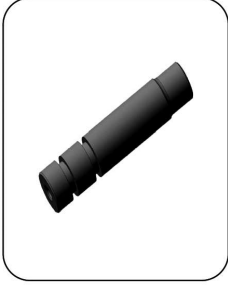
KAB02 40
D1

Not: Toleranssız tüm ölçüler EN 22768-1(m) standardına göre tüm köşelere pah kırılacak.

Malzeme: CK45

KAB02

	40▼	50▼
D1▶	39	49
D2▶	172	206
L1▶	88	108
L2▶	39	43
L3▶	65	70
L4▶	45	50
A▶	27	32
B▶		



SİPARİŞ ÖRNEĞİ

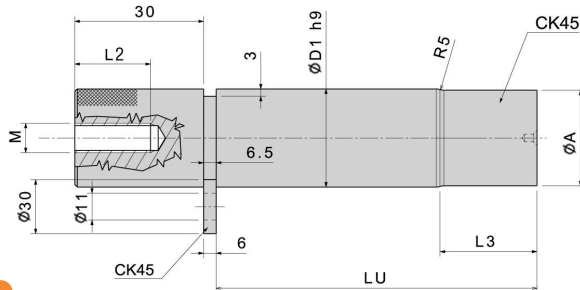
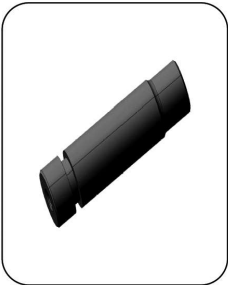
KAB03 25 81
D1 LU

Not: Toleranssız tüm ölçüler EN 22768-1(m) standardına göre tüm köşelere pah kırılacak.

Malzeme: CK45

KAB03

D ▶	25 ▼		32 ▼		40 ▼		50 ▼		63 ▼	
LU ▶	81	98	103	148	132	192	165	220	210	250
A ▶	23	23	30	30	38	38	40	40	61	61
L1 ▶	22	22	22	22	32	32	32	32	32	32
L2 ▶	20	20	25	25	32	32	40	40	50	50
L3 ▶	19	19	26	26	33	33	41	41	51	51
L5 ▶	M8	M8	M8	M8	M10	M10	M10	M10	M12	M12
A	15	15	15	15	20	20	20	20	25	25



SİPARİŞ ÖRNEĞİ

KAB04 20 98
D LU

Not: Toleranssız tüm ölçüler EN 22768-1(m) standardına göre tüm köşelere pah kırılacak.

Malzeme: CK45

KAB04

D ▶	20 ▼	25 ▼	32 ▼		40 ▼		50 ▼		63 ▼		80 ▼
LU ▶	81	81	98	103	148	132	192	165	220	210	250
A ▶	18	23	23	30	30	38	38	48	48	61	61
L3 ▶	19	19	19	26	26	33	33	41	41	51	51
M	M8	M8	M8	M8	M8	M10	M10	M10	M10	M12	M12
L5 ▶	15	15	15	15	15	20	20	20	20	25	25