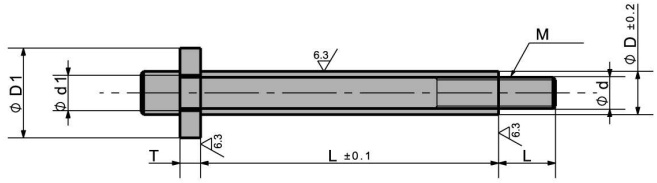


STOP PİMLERİ



SİPARİŞ ÖRNEĞİ

ACB01 12 140
M L

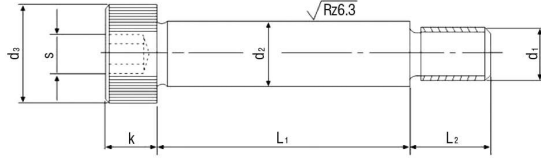
ACB 01

Malzeme	Sertlik (HRC)	Yüzey Kaplama
Burç	-	
Pul	25 - 30	Siyah Oksidasyon
Civata	M12 - M20 : 38 - 43 HRC M20 - M30 : 32 - 37 HRC	

ACB 01

D ▶	17.3	21.7	27.2	31.8	38.1	31.8	42.7
d ▶	12.7	16.1	20.4	24.8	31.1	21.8	30.7
D1 ▶	36	45	45	60.5	60.5	45	60.5
d1 ▶	12.5	16.5	21	24.5	30.5	21	30.5
T ▶	8	10	10	10	16	16	20
L ▶	22	30	40	50	54	34	60
M ▶	12	16	20	24	30	20	30
L ▶	40 - 45 (5mm artarak) 120 - 130 (10mm artarak)	50 - 55 (5mm artarak) 110 - 120 (10mm artarak)	50 - 55 (5mm artarak) 100 - 110 (10mm artarak)	50 - 55 (5mm artarak) 90 - 100 (10mm artarak)	50 - 55 (5mm artarak) 80 - 90 (10mm artarak)	50 - 55 (5mm artarak) 100 - 110 (10mm artarak)	50 - 55 (5mm artarak) 70 - 80 (10mm artarak)

ASKI CİVATASI



SİPARİŞ ÖRNEĞİ

STP M5 6
d1 L1

Malzeme: Alaşım Çelik (Tasarlanmış, sertleştirilmiş)

STP

	6	8	10	12	16	20	24
d1	M5x0.8	M6x1	M8x1.25	M10x1.5	M12x1.75	M16x2	M20x2.5
d3	10	13	16	18	24	14	16
K	4.5	5.5	7	8	10	21	30.5
L2	9.5	11	13	16	18	22	27
S=Allen	3	4	5	6	8	10	12
L1	L1h11						

16	●	●	●	●			
20	●	●	●	●			
25	●	●	●	●			
30	●	●	●	●	●		
35	●	●	●	●	●		
40	●	●	●	●	●	●	
45	●	●	●	●	●	●	
50	●	●	●	●	●	●	●
55		●	●	●	●	●	●
60		●	●	●	●	●	●
65		●	●	●	●	●	●
70		●	●	●	●	●	●
80		●	●	●	●	●	●
90		●	●	●	●	●	●
100			●	●	●	●	●
120				●	●	●	●